

Sterling

5000 BHP Harbour Tug



PB Towage



General Information

Yard	Cheoy Lee Shipyard Hong Kong
Built	2005
Port of Registry, Flag	Sydney, Australia
Call Sign	9V6603
Official Number	390951
Classification Society	Lloyds
IMO No.	9329136

Machinery

Main Engines	2 x Caterpillar 3516B
Horsepower	5000 BHP
Bollard Pull	60mt
ASD Propellers	Z-drive Schottel SRP
Winches	Plimsoll PR-HTW/DD-20T
Line Pull (Fore)	20/10t x 10/20 m/min
Drum Capacities	110m x 96mm mooring line / 750m x 45 mm tow wire
Deck Crane	Palfinger 1.5T @ 6m

Dimensions

Length Overall	27.4m
Beam, Moulded	11.5m
Max Operating Draft	5.2m
GRT/NRT	327/98

Capacities & Performance

Fuel	110m3
Potable Water	23m3
Max Speed	12.5knots

Accommodation

2x1 / 2x3 / 1x2 = 8 persons

Communication Equipment

Radar	Furuno FR1942 Mark 2
SSB Receiver	Furuno FS-2570C
Immarsat C	Furuno Felcom 15

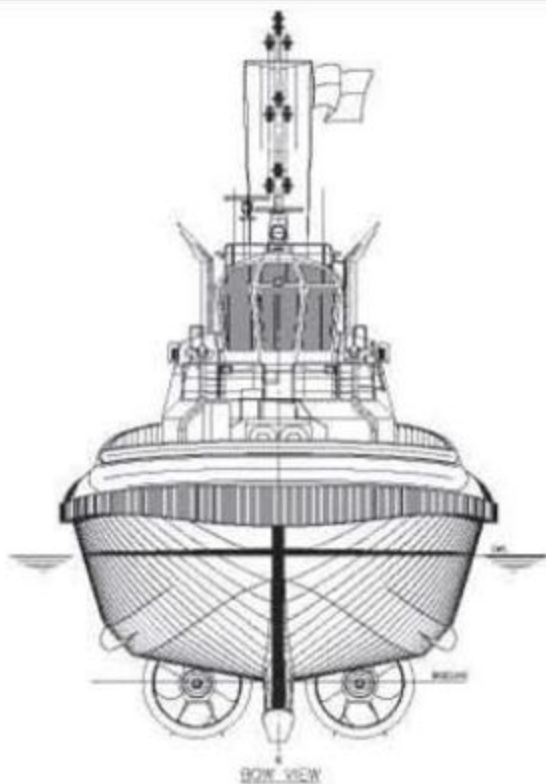
Fire Fighting

Fire Pump	1 x ABS SFP 1400 m3/hr @125m head c/w water curtain
Fire Monitors	2 x Skum type FFS 1200 dual purpose foam/water 600m3/hr each

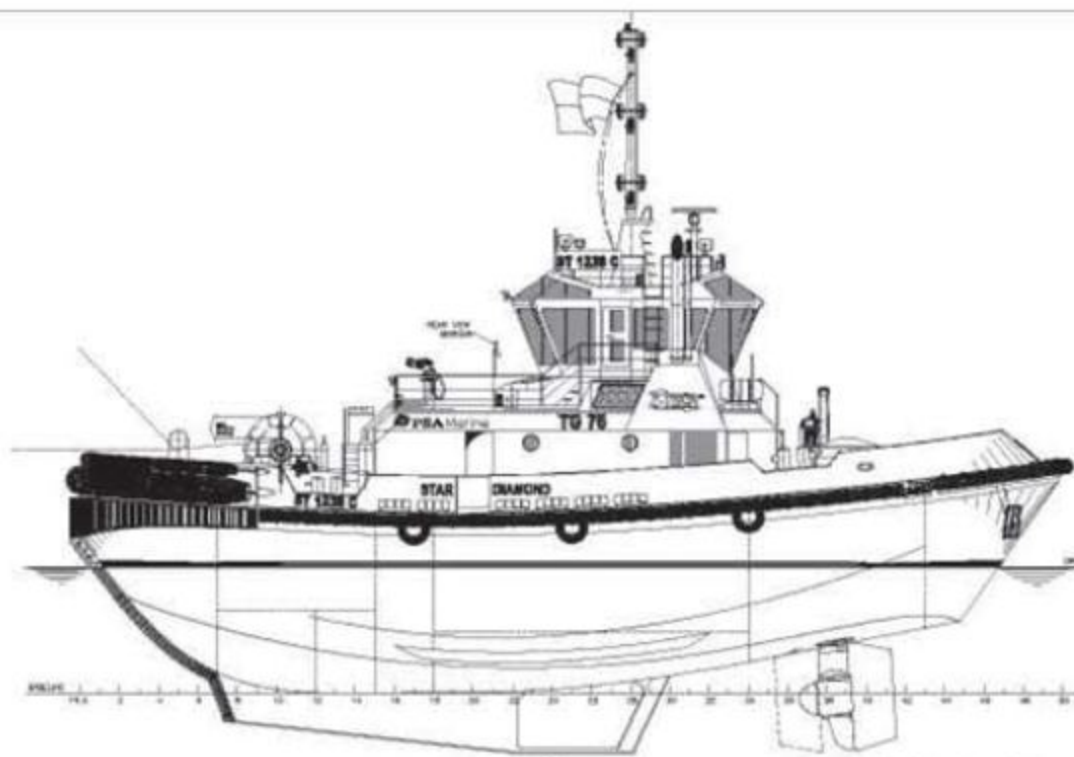
PB Towage

46 Mews Road, Fremantle, WA 6160, Australia

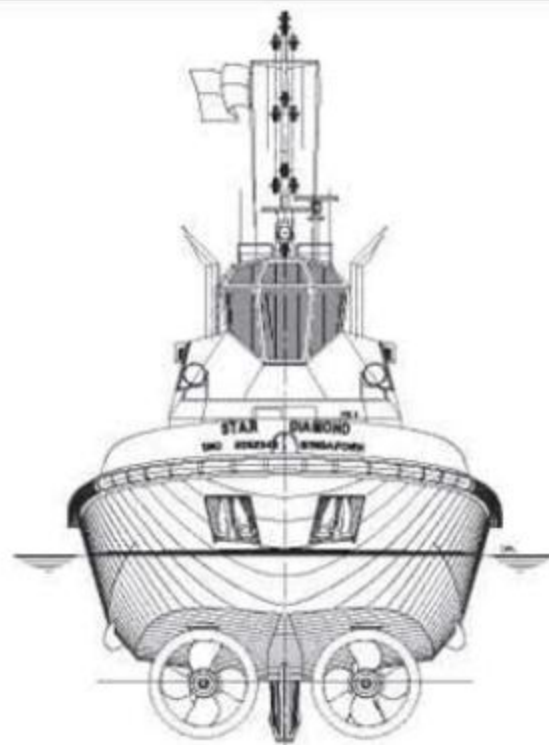
Tel: (+61) 8 9432 8900 E-mail: pbtowage@pacificbasin.com Website: www.pbtowage.com



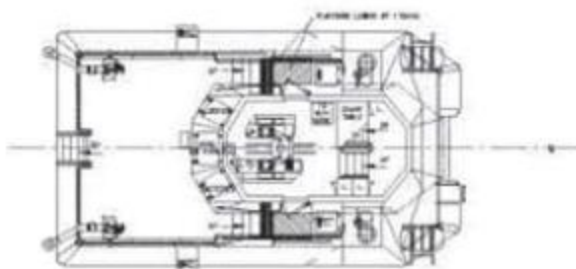
BOW VIEW



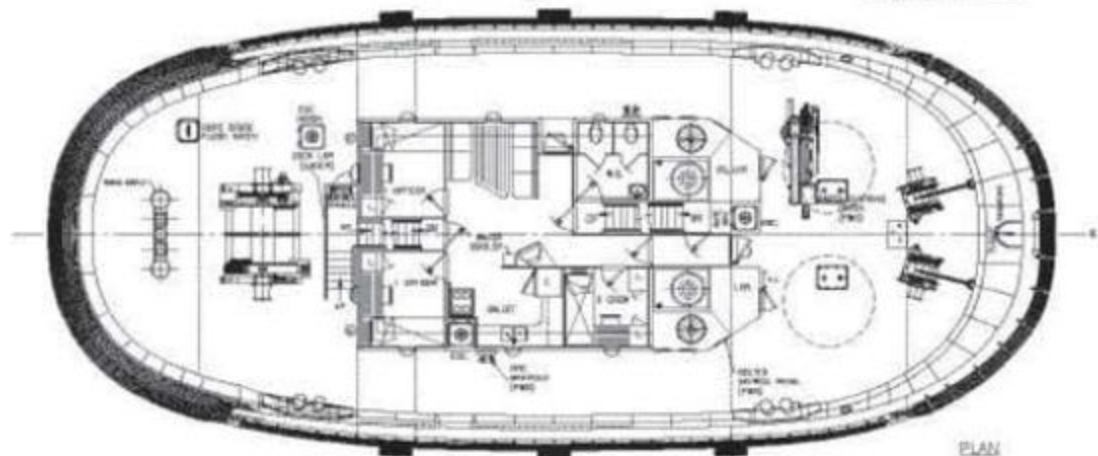
OUTBOARD PROFILE



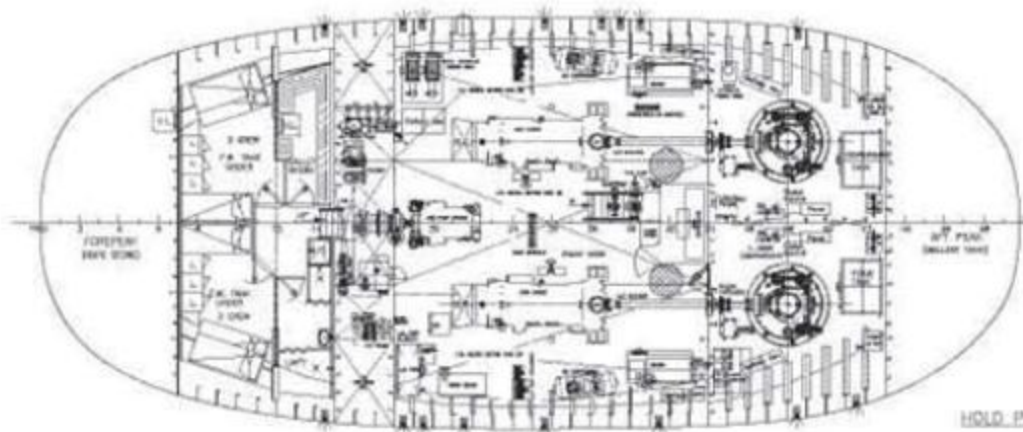
STERN VIEW



WHEELHOUSE PLAN



PLAN



HOLD PLAN

PARTICULARS

LENGTH OVERALL	27.40M
LENGTH WATERLINE	25.30M
BEAM, MAX.	11.50M
DEPTH, HULL	3.50M
TURBINE LOGS DRIFT	3.50M
DRIFT, MAX.	5.00M
BOLLARDS PULL	800 TONNES
SPEED	12 KNOTS
CLASS	LASHED AT TUG, HULLMARK

SHIP NAME	Star Diamond/ST 70	YARD No.	4906
IMO No.	9187442	PORT OF REGISTRY	Singapore
CLASS	EX +100T TUG, +LWC, LMS		
DELIVERY DATE	2007-12-18		
BUILDER	Cheong Lee CHEOY LEE SHIPYARDS LTD. 80-82 HONG KONG STREET SINGAPORE 061101, SINGAPORE TEL: (65) 4347 8888 FAX: (65) 4347 8877		
BUILDER	HIN LEE (ZHUHAI) SHIPYARD CO. LTD. 20001, SHUNGAO, GUANGDONG, CHINA / PORT OF REGISTRY TEL: (86) 754 224888 FAX: (86) 754 221992		
	ROBERT ALLAN LTD. NAVAL ARCHITECTS AND MARINE ENGINEERS 230-1628 WEST 2ND AVE. VANCOUVER, B.C.		
VESSEL	Z-TECH 2800 TUG		
CLIENT	PSA MARINE (PTE) LTD		
TITLE	GENERAL ARRANGEMENT		
DRAWN BY	CHKD BY	PROJECT No.	202-072
LHL	XH/RGA	DRG. No.	
DATE	YARD No.	NO. No.	REV.
APRIL 2005	4906	30000	AS FITTED