

# PB Progress



## 3000 BHP Ship Assist and Coastal Towing Tug



### General Information

Design	Robert Allan Ltd
Shipyard	Gemsan Shipyard, Turkey
Built	2008
Port of Registry, Flag	Avatiu, Cook Islands
Call Sign	E5U2247
Official Number	1331
Classification Society	ABS
IMO No.	9429508
MMSI No.	518297000

### Dimensions

Length Overall	25.25 m
Beam, Moulded	8.60 m
Max Operating Draft	4.00 m
GRT/NRT	224 mt/108 mt

<b>Accommodation</b>	2x1 + 1x2 + 1x3 7 berths total
----------------------	-----------------------------------

### Machinery

Main Engines	2x Caterpillar 3512B
Horsepower	3000 BHP
Bollard Pull	46.5 mt
Propulsion	Twin Screw
Aft Winch	Data Hydraulic, 90 T brake
Line Pull	8.1 mt at 20 m/min
Drum Capacities	500 m x 40 mm wire
Towing Hook	45 mt
Towing Pins	Retractable

### Capacities & Performance

Fuel	70,000 litres
Potable Water	31,500 litres
Max Speed	13 knots

### Communication Equipment

A1 + A2 + Iridium

<b>Fire Fighting</b>	FiFi 1/2
----------------------	----------

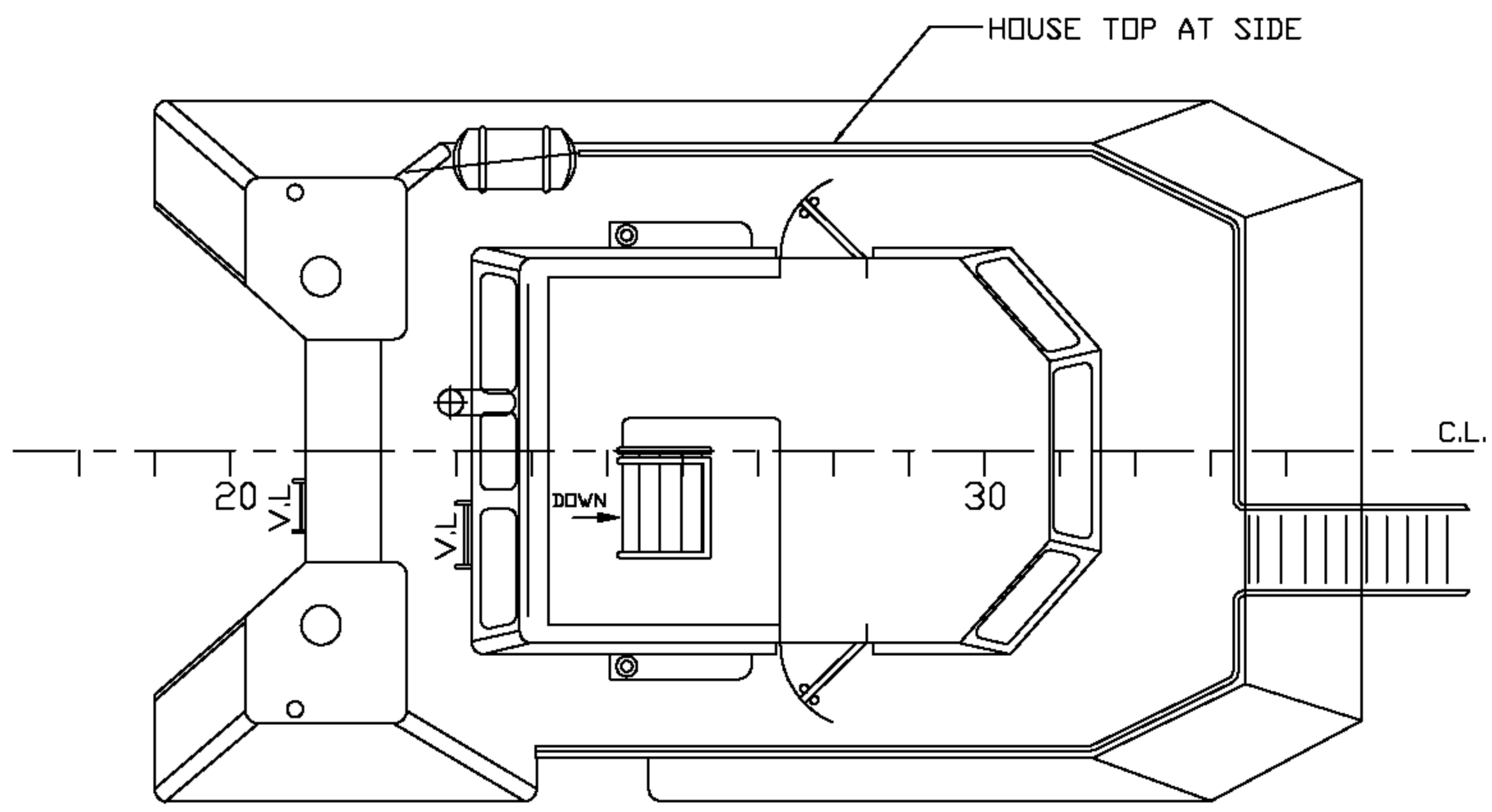
### PB Towage

7/F, Hutchison House, 10 Harcourt Road, Central, Hong Kong.

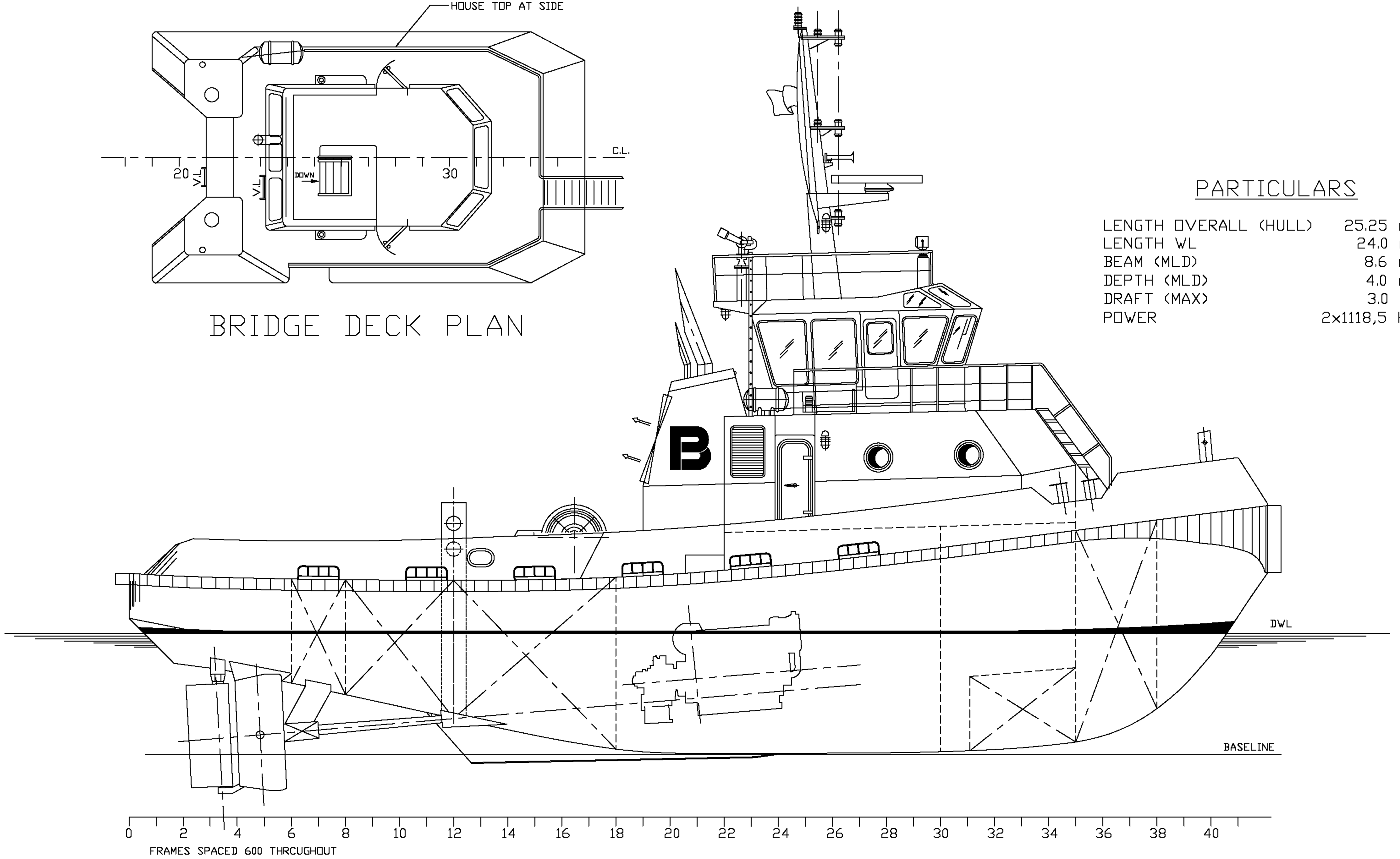
Tel: (+852) 2233 7000 E-mail: [pbtowage@pacificbasin.com](mailto:pbtowage@pacificbasin.com) Website: [www.pbtowage.com](http://www.pbtowage.com)

**PARTICULARS**

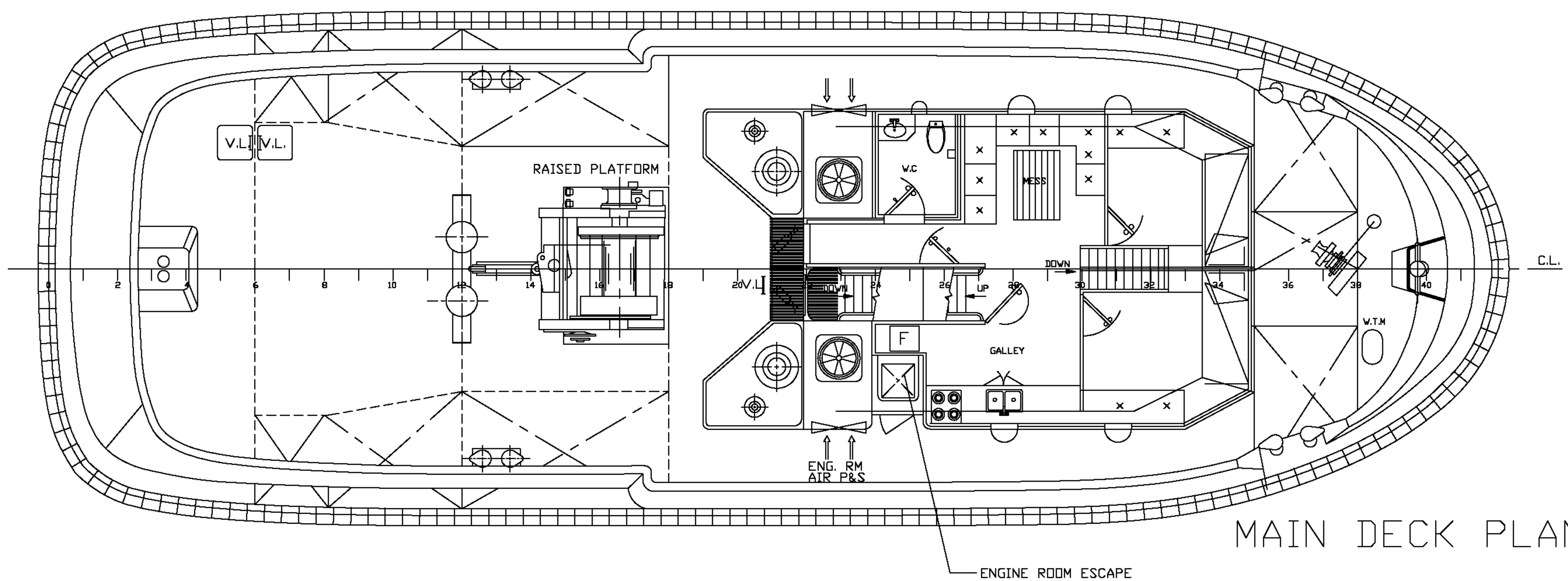
LENGTH OVERALL (HULL)	25.25 m
LENGTH WL	24.0 m
BEAM (MLD)	8.6 m
DEPTH (MLD)	4.0 m
DRAFT (MAX)	3.0 m
POWER	2x1118,5 KW



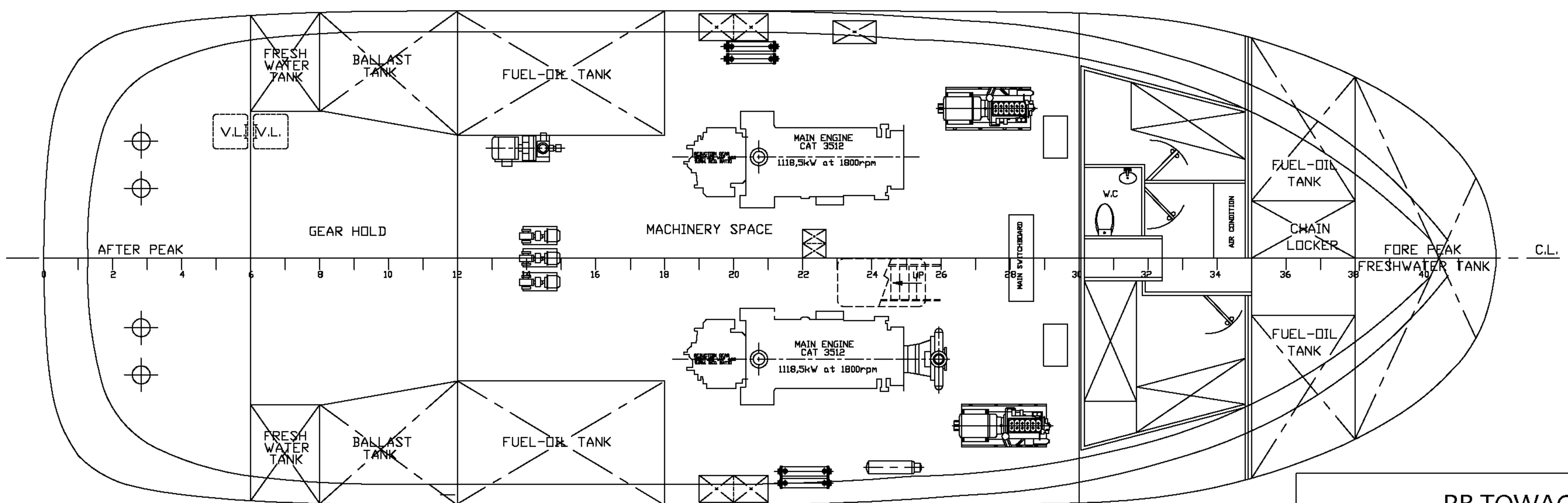
**BRIDGE DECK PLAN**



**OUTBOARD PROFILE**



**MAIN DECK PLAN**



**BELOW DECK PLAN**

<b>PB TOWAGE</b>			
<b>PB PROGRESS</b>			
<b>GENERAL ARRANGEMENT</b>			
SCALE	DATE	CLASS	
1/125	10.01.2005	A.B.S.	